

GF-DH75 & GF-DH100 Display Board Replacement Instructions

Approximate time to replace the board: 5 minutes

⚠ WARNING: Installation or maintenance of the dehumidifier must be performed by a qualified service technician. The service technician must use the proper tools and equipment and be licensed by the proper authority where applicable. Installation or service work performed by an unqualified person could result in hazards to that person, other people and property. These hazards could include, but are not limited to, electric shock, fire, severe burns, damage to dehumidifier components and other hazards.

⚠ WARNING: Before starting, shut off the unit and unplug the dehumidifier power cord. Failure to follow the warnings and instructions may result in electric shock and/or serious injury.

You Will Need: A Philips head screwdriver
A T15 Torx wrench (Included)



Step 1 — Using your Phillips head wrench, locate and unscrew the screw at the top of the filter door by a quarter turn counter clockwise. Remove the door (Figure 1). Slide the filter out (Figure 2).



Figure 1



Figure 2

Step 2 — Using the included T15 Torx wrench, locate and unscrew the four screws holding the display board (Figure 3) in place. Once the board is loose, carefully unplug the two wire inserts (Figure 4). Set aside the old display board.



Figure 3



Figure 4

Step 3 – Insert the new display board through the open filter door and place behind the display board opening, ensuring the arrows are pointing up (Figures 5). Reconnect the two wire plugs to the new board (Figure 6). Use the T15 Torx wrench to screw the 4 screws back into the new display board, holding on to the back of the board until all four screws are fully seated (Figure 7).



Figure 5

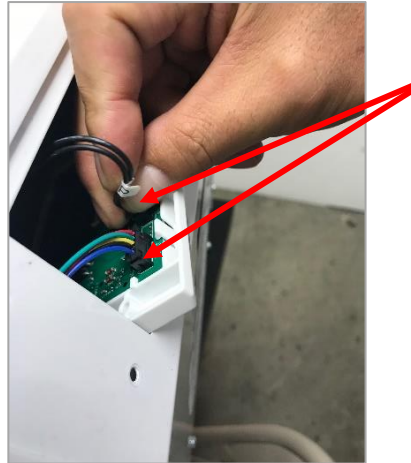


Figure 6



Figure 7

Step 4 – Re-insert the filter (Figure 8). Use the Phillips head screwdriver to re-attach and screw in the door (Figure 9). Finally, plug the unit in and adjust the settings as desired.



Figure 8



Figure 9

Your new control board includes an additional feature: **Humidity Offset**.

The **Humidity Offset** allows you to match the humidity reading on your dehumidifier to your personal humidity meter reading; adjustable by ± 8 .

Find this under: Settings.

Step 5 – If you use the GeneralAire APP to display your dehumidifier, reconnect the Wi-Fi with the new mobile APP pin. Because it is new, you will need to re-connect the display board to the home's Wi-Fi as described in the installation manual. If the manual is not handy, simply visit www.generalfilters.com to download the manual as needed.



Contact Tech Support at (888) 216-9184 with any questions.