

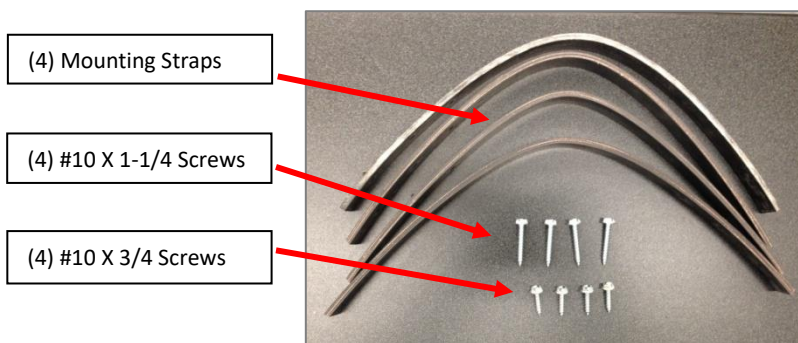
GF-DH75 & GF-DH100 Dehumidifier Hanging Kit Instructions

⚠ WARNING: Installation or maintenance of the dehumidifier must be performed by a qualified service technician. The service technician must use the proper tools and equipment and be licensed by the proper authority where applicable. Installation or service work performed by an unqualified person could result in hazards to that person, other people and property. These hazards could include, but are not limited to, electric shock, fire, severe burns, damage to dehumidifier components and other hazards.

⚠ WARNING: The installer is responsible for selecting a structure capable of holding the dehumidifier. The screws securing the hanging straps to both the dehumidifier and structure must be fully seated. Failure to install the dehumidifier level may affect performance and drainage of condensate.

⚠ WARNING: Before starting to hang the dehumidifier, shut off the unit and unplug the dehumidifier power cord. Failure to follow the warnings and instructions may result in electric shock and/or serious injury. A two-person team is recommended.

Included in Hanging Kit



Extra Tools Needed

1. Drill or impact driver with 5/16 socket
2. T25 Torx bit screw driver
3. A level

Step 1 — Locate the 2 screws on each end (four total) of the unit as shown below. Remove each of the four screws with a T25 Torx bit screw driver (Figure 1).

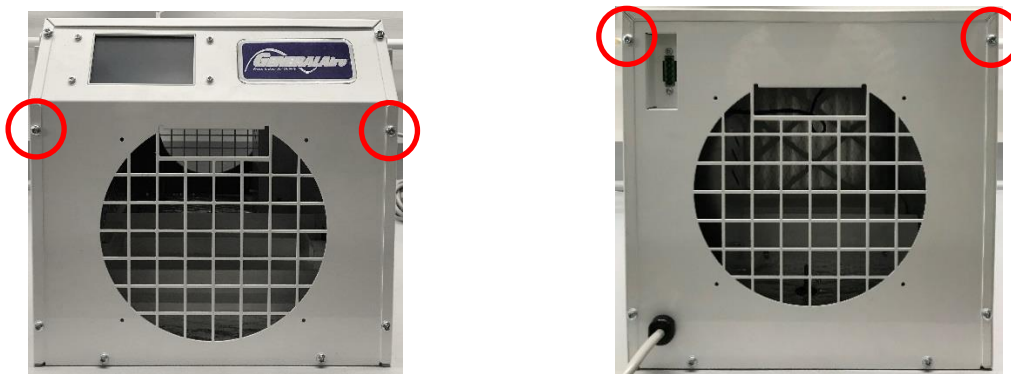


Figure 1

Step 2 – Secure each of the four hanging straps to the dehumidifier (the ends with one hole) with #10 x 3/4" screws (Figure 2 next page) using the 5/16" socket in a drill or impact driver.

! IMPORTANT: The #10 x 3/4" screws must be securely seated through both the cover and end panels.

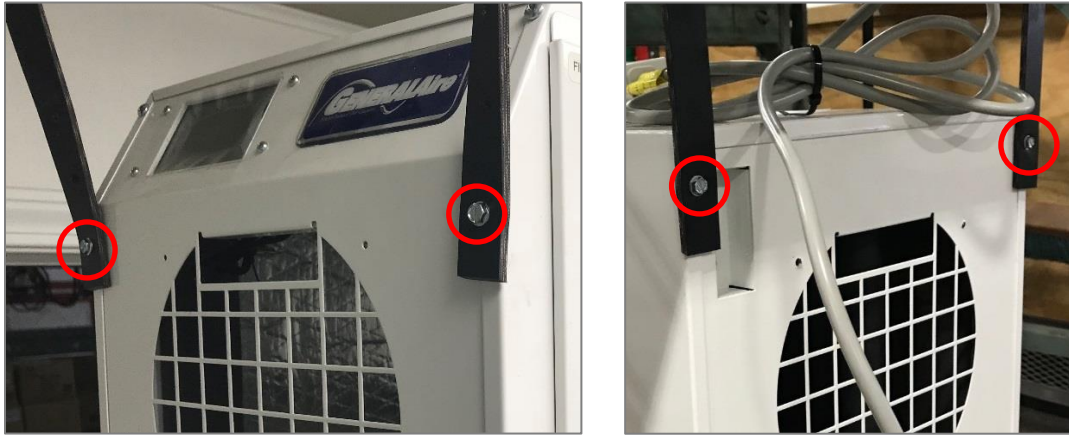


Figure 2

Step 3 – Secure the hanging straps to the desired structure with the #10 x 1-1/4" screws using the 5/16 socket in a drill or impact driver (Figure 3 below). Any of the 3 holes in the opposite end of the hanging straps can be used for the installation.

! IMPORTANT: Make sure the dehumidifier is level in all directions.

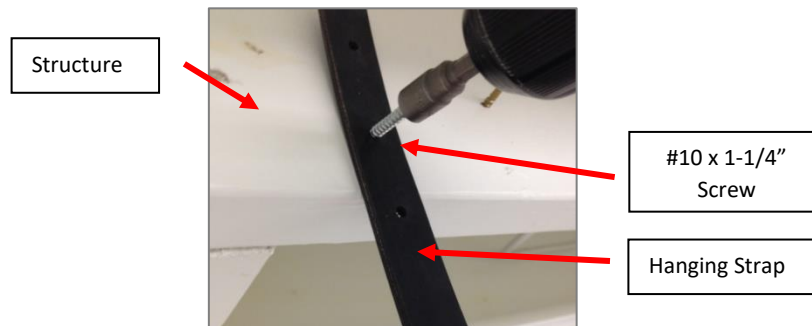


Figure 3

Complete the remainder of the installation and start-up procedure as described in the dehumidifier installation manual.

Contact Tech support at (888) 216-9184 with any questions.